

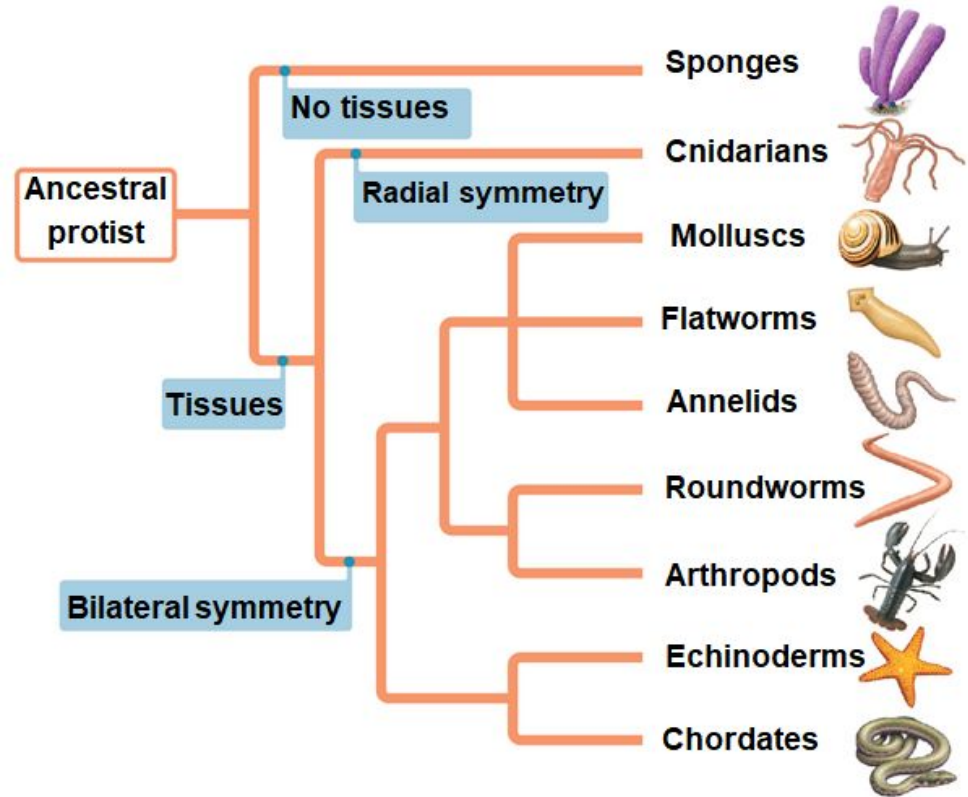
# College Biology

## Lesson 4/10/2020

Lesson Target Origins of Animal Diversity,  
Sponges, Cnidarians, and Molluscs

# Let's get started

1. Look at the phylogeny. Chordates (the phylum that includes humans) are most closely related to which other animal phylum?



2. What mode of nutrition distinguishes animals from fungi, both of which are heterotrophs?



# Answers

1. Echinoderms
2. Ingestion (eating)

# Lesson Activity

Directions:

1. Read over pages 1-11 of the Chapter 17 Notes. ([Linked Here](#))
2. Watch the Crash Course video on [Sponges](#)

# Practice

1. Go to the website linked below. Read about Darwin and then take the quiz. After successfully completing the quiz play the game until you survive one million years as a species.

[https://coolsciencelab.com/who\\_wants\\_to\\_live\\_a\\_million\\_years.htm](https://coolsciencelab.com/who_wants_to_live_a_million_years.htm)

# Practice

Complete the [Self quiz](#) which starts on page 369 in your book. The [answers](#) can be found in Appendix D of your book.

List 3 distinguishing characteristics for Sponges, Molluscs, and Cnidarians.

# Review Tools

-[Kahoot 1](#)